

NOTE: CONCRETE TANK CAPACITIES REMAIN THE SAME. HOWEVER, TANK DIMENSIONS MAY VARY BY STATE OR AVAILABILITY.

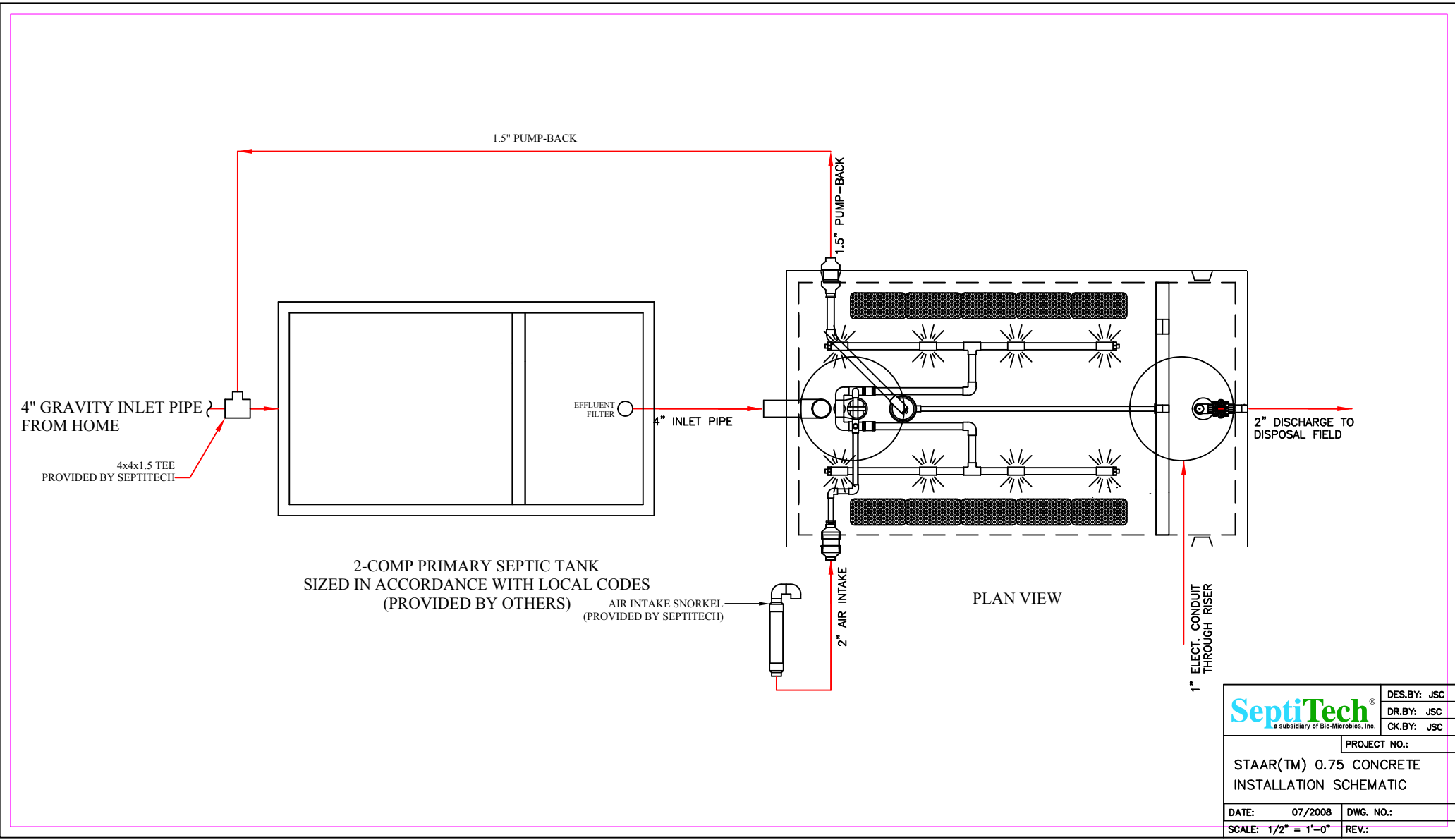
12	8	Media Bags (Large) 22 CUFT
11	1	Air Header Assembly
10	1	Inlet Piping Assembly
9	1	Spray Header Assembly
8	1	Spray Header Support Structure
7	1	Recirculation Pump, Tsurumi 50PN2.25S
6	1	Pump Back Assembly, Goulds LSP03
5	1	Pump Back Stand Assembly
4	1	Support Structure
3	1	Discharge Pump Assembly, Goulds LSP03
2	3	Wall Insert Assembly
1	1	1250 Gal. Tank


ITEM	QTY.	DESCRIPTION
------	------	-------------

DES.BY: JSC  
DR.BY: JSC  
CK.BY: DR

PROJECT NO.:  
**STAAR(TM) 0.75 CONCRETE  
TOTAL TANK LAYOUT**

DATE:	07/2008	DWG. NO.:	
SCALE:	1/2"=1'-0"	REV.:	1



 <small>a subsidiary of Bio-Microbics, Inc.</small>	DES.BY: JSC
	DR.BY: JSC
	CK.BY: JSC
PROJECT NO.:	
STAAR(TM) 0.75 CONCRETE INSTALLATION SCHEMATIC	
DATE: 07/2008	DWG. NO.:
SCALE: 1/2" = 1'-0"	REV.: